

Use less water with RTF.



If water rationing and local drought conditions cause you to panic about maintaining green turf during the summer months then choose RTF. Recent studies at New Mexico State University prove that RTF maintained it's high turf quality all summer long - even under 30% drought conditions.

Bernd Leinauer Ph. D. of New Mexico State University conducted a trial to illustrate how different species and varieties would maintain turf quality under drought conditions. The trial was set up to show the differences at both 15% and 30% less water usage than needed to maintain ideal turf conditions.

RTF performed very well in this trial. And it's performance was the best in the hottest months. RTF performed better than all other entries, which included hybrid bluegrass and highly rated NTEP tall fescues. The graph's on the next page illustrate how the entries maintained turf quality at 15% and 30% less daily water needs in June, July, August and September.



RTF Water Saver Grass Seed

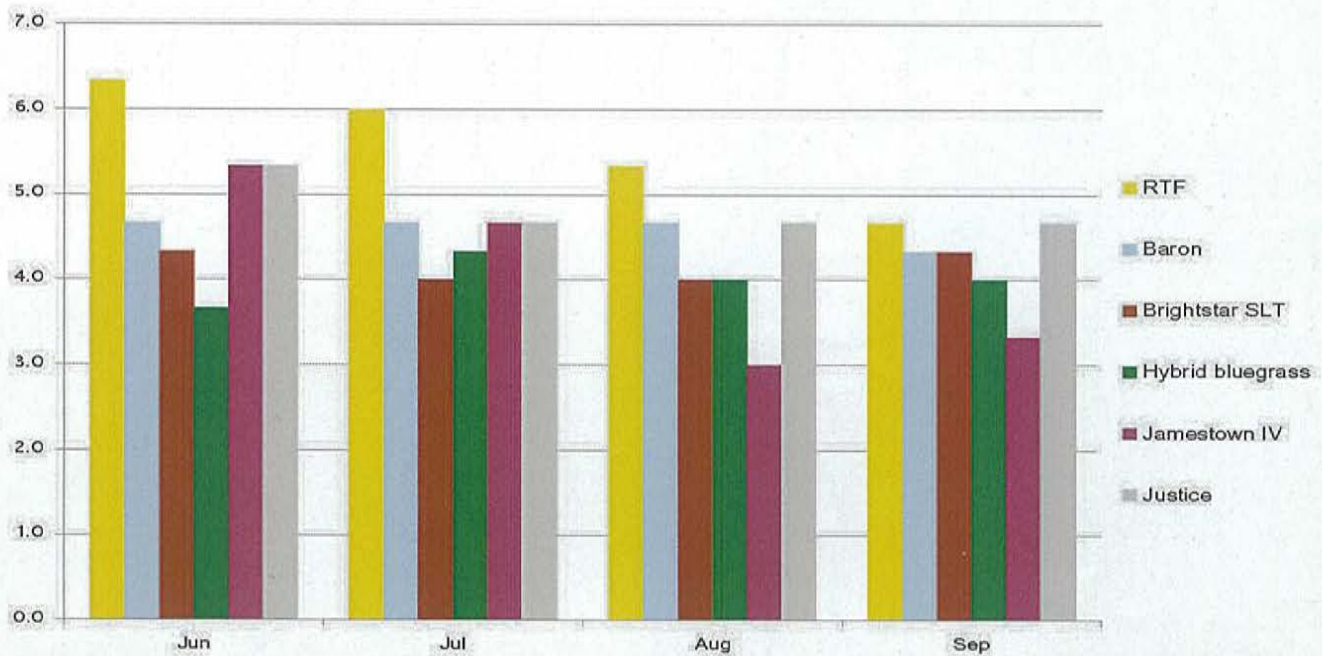


Ryan Streach
National Agent & Marketing Director
Toll Free: (800) 556-2272
Email: rstreach@granview.ca

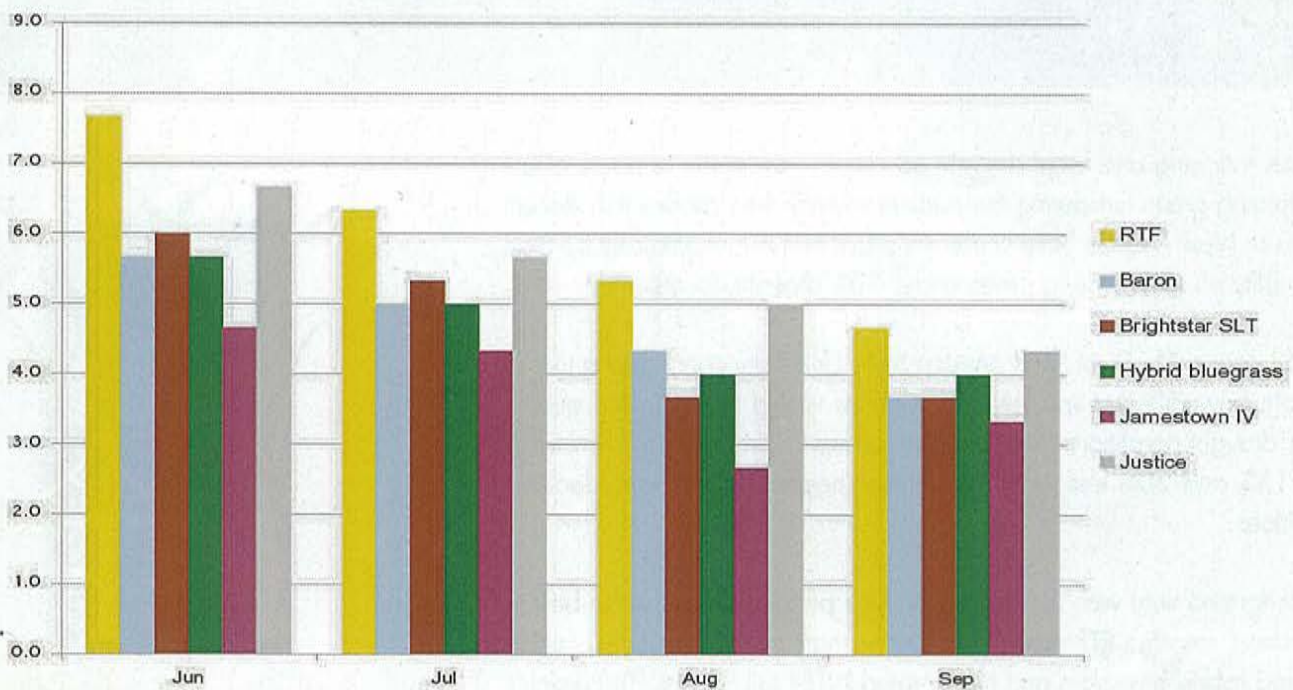


www.RTFwatersavercanada.com

Visual Turf Quality Ratings at 30% less than the daily water needs



Visual Turf Quality Ratings at 15% less than the daily water needs



The graphs above illustrate that under drought conditions RTF is able to maintain its dark green color throughout the summer better than other varieties. These graphs also show you can save water! RTF is able to stay lush and green under conditions where 30% less water was used.

Tall fescue is recognized as being more drought tolerant than most other species due to its deep rooting ability. RTF is one of the deepest rooting varieties available. Its roots can dig as deep as 6 feet - tapping into water not normally available to other varieties and species. In addition RTF has been selected for drought and heat tolerance and is endophyte enhanced which gives it an advantage that is unparalleled in the industry.